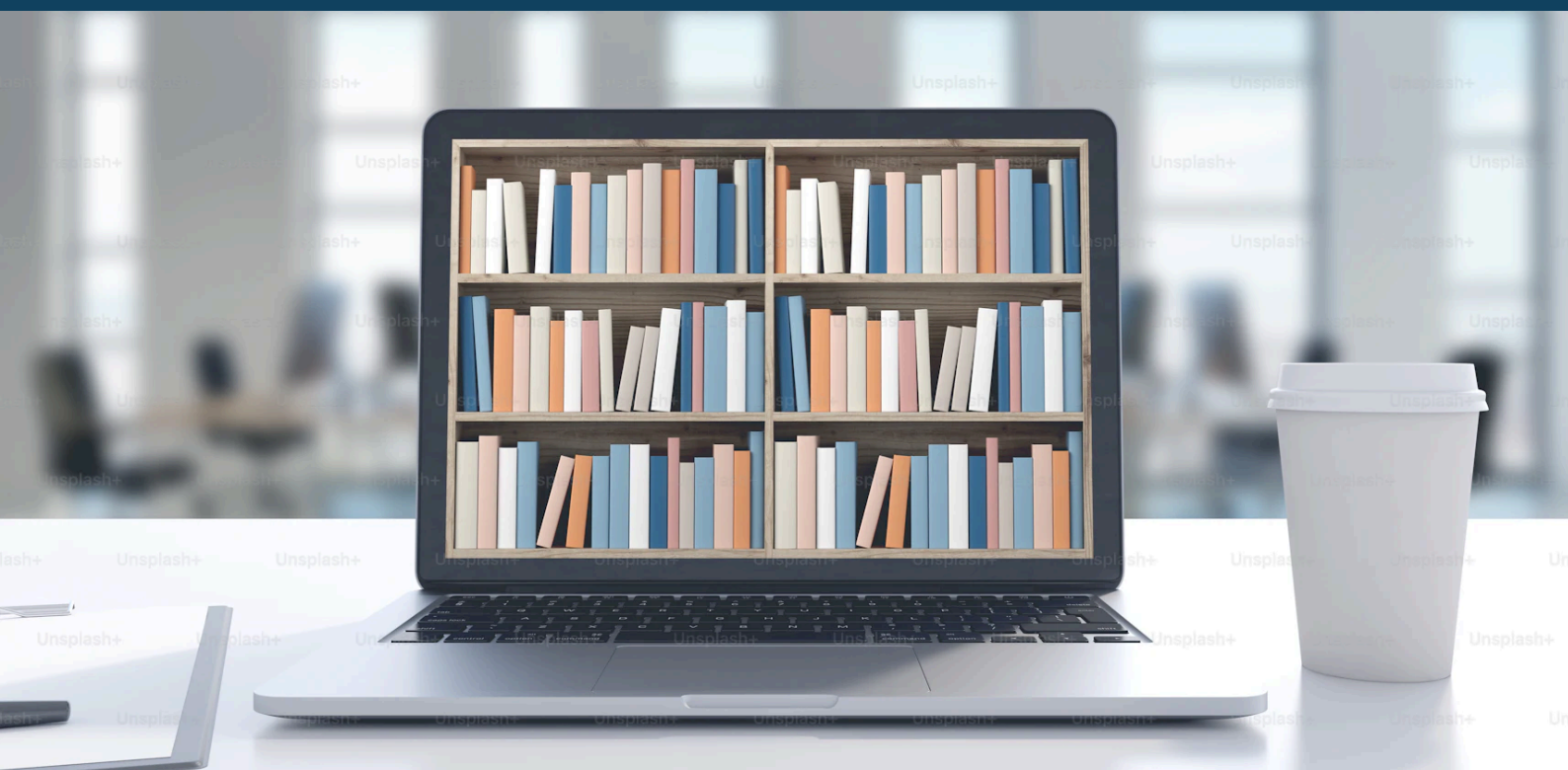




LIBRARY GUIDE



Download a PDF
of this guide



ABOUT US

We are located in the Knowledge Hub at The Royal Orthopaedic Hospital



What we offer

- Counter services open weekdays 8am-4pm. Staff and students can use the library for study and work outside of these hours but please be mindful of the Trust lone working policy.
- Book loans via Health Libraries Midlands (HeLM).
- E-resources via OpenAthens.
- Literature search and article request services
- Library inductions and skills training.
- Study space: a quiet spot where you are welcome to eat, drink, study, work and use our computers. Wi-fi is available under '**NHS Wi-Fi**'
- ROH Pantry: a range of food, drink and toiletries arranged on the shelves for staff or students who need them.
- Wellbeing area: a range of books and other resources for supporting your physical and mental health.

Health Libraries Midlands (HeLM)

Your HeLM membership allows you to borrow up to 16 library books at a time and order from thousands of books via the HeLM network.

Books can be loaned for 6 weeks on many titles, with more popular titles on 1 or 2 week loan. Books will be renewed automatically 5 times unless requested by another library user.

Manage Your HeLM Account Online

Login to the HeLM website with your membership number and password to search the catalogue or manage your account.

How to register for HeLM

Join Online:

- Visit the HeLM website, click **Membership** then **Join the Library**
- Click **Online Application Form** and complete the form
- You will be emailed when your library card is ready for collection

Join at the library:

- Visit ROH Library between 8-4 on weekdays and fill in a paper form

RESOURCES AND SERVICES

What is OpenAthens?

An OpenAthens account provides access to Library e-resources. To register:

- Visit the OpenAthens registration page and register using “Royal Orthopaedic Hospital NHS Foundation Trust” as Organisation
- Once activated you can use OpenAthens to access e-resources from any internet connection

Library e-resources include:

- **NHS Knowledge and Library Hub**
Search and access journal articles and high quality knowledge/evidence resources in one place.
- **AnatomyTV** for interactive anatomy demonstrations and learning
- **BMJ Best Practice** for clinical decision support, case studies and patient leaflets
- **ClinicalKey** for clinical overviews, ebooks, journal articles and patient leaflets
- **Ovid** for The Bone and Joint Journal and the Journal of Bone and Joint Surgery, along with searching a range of medical databases

Literature Searches

We provide Literature Search services to support research, study or patient care. Simply email your search requirements to **roh.library@nhs.net**

Article Requests

If you are unable to access an article through OpenAthens, we may be able to obtain it for you. To request an article email the library team at **roh.library@nhs.net**

Current Awareness

Receive fortnightly current awareness emails on the latest evidence in your field by signing up to KnowledgeShare. To register email the library team at **roh.library@nhs.net**

Inductions

We can provide a library induction to you, your team or department. Please email **roh.library@nhs.net**

Help and Training

For help with literature searches, critical appraisal or using Library resources please email **roh.library@nhs.net**



**Links and
contact details**



CONTACT US

Library Enquiries

roh.library@nhs.net

0121 685 4029 | ext. 55540

Links

Library Website:

<https://www.healthlibrariesmidlands.nhs.uk/roh-library/>

HeLM Library Website:

<https://www.healthlibrariesmidlands.nhs.uk/>

NHS Knowledge and Library Hub:

<https://library.nhs.uk/knowledgehub>

Anatomy.tv

<https://www.anatomy.tv>

OpenAthens Registration:

<https://openathens.nice.org.uk>

ClinicalKey

<https://www.clinicalkey.com>

BMJ Best Practice

<https://bestpractice.bmj.com>

Ovid

<https://ovidsp.ovid.com/>

Social Media

Twitter/X: @ROHKnowledgeHub

Instagram: @ROHKnowledgeHub

Facebook: KnowledgeHubROH

LinkedIn: ROHKnowledgeHub